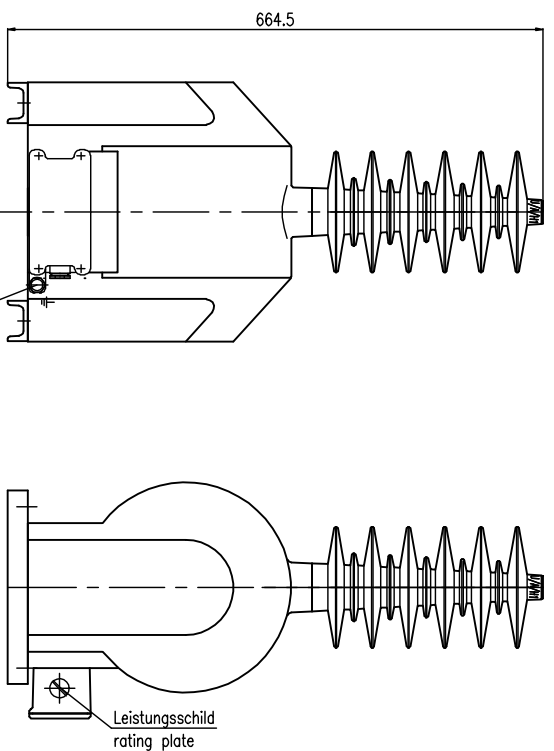
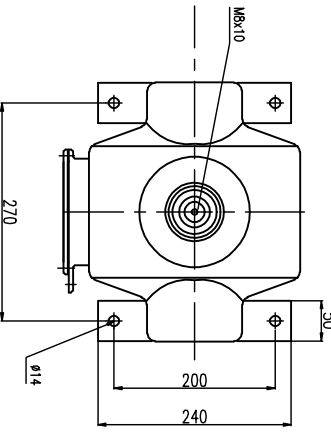


TYPE: VEF 36-15

Gießharz-Freiluft-Spannungswandler / cast-resin-outdoor-voltage-transformer Um = 36 kV



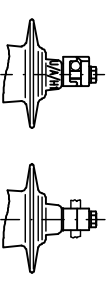
Var	Terminal Box	plombierbar/ scelable
107	PG16	
110	PG21	
123	2xG21,25	*
124	2xNPT1"	*
116	3xNPT 1"	
125	3/4"	
119	2xNPT1"	



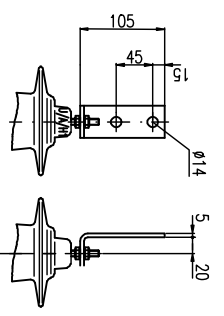
Kriechweg
creepage distance : 1250 mm

Schlagweite
flash-over distance : 500 mm

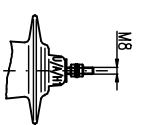
Var. 237
H.V. connector
(ref. dwg. no. 35K 36/89)



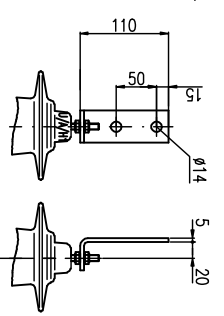
Var. 238
H.V. connector
(ref. dwg. no. 35K 44/89)



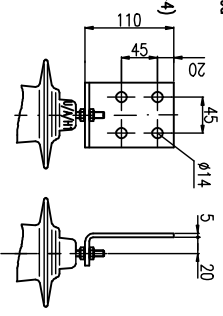
Var. 225
H.V. connector



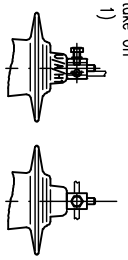
Var. 228
H.V. connector



Var. 239
H.V. connector Cu, tin plated
Var. 281
H.V. connector Al
(ref. dwg. no. 35K 13/89-4)



Var. 607
H.V. connector
Vertikal / Horizontal take off
up to Ø8 (max. AWG 1)



Geringe Maß- und Konstruktionsabweichungen vorbehalten !
Small deviations in dimension and design possible !

Masse: ca. 51 Kg
Weight: appr.
Alle Abmessungen in mm
All dimension in mm



RITZ
Instrument Transformers

Zeichnungs-Nr./Drawing No.:
V 30-31-015.01

Datum:/Date:
erst.: 23.11.00 Rev.01 27.04.11 AN
Sign :